

May In Motion

- Established in 2004
- Switched from individual commuter focus to an employer outreach strategy in 2007
- 100+ participating employers



Why May in Motion?

- Businesses
- Employees/Commuters

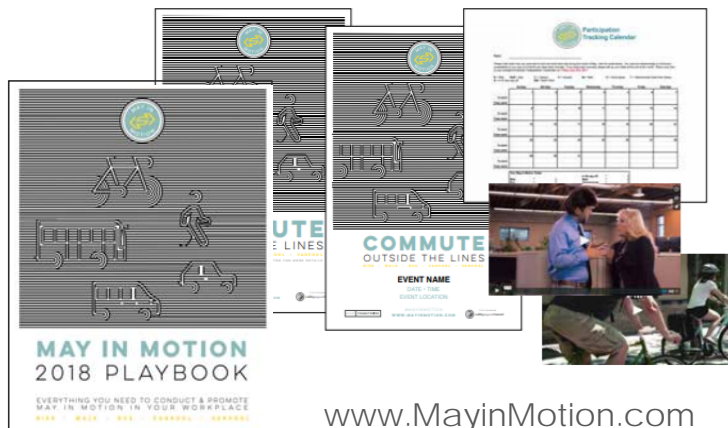


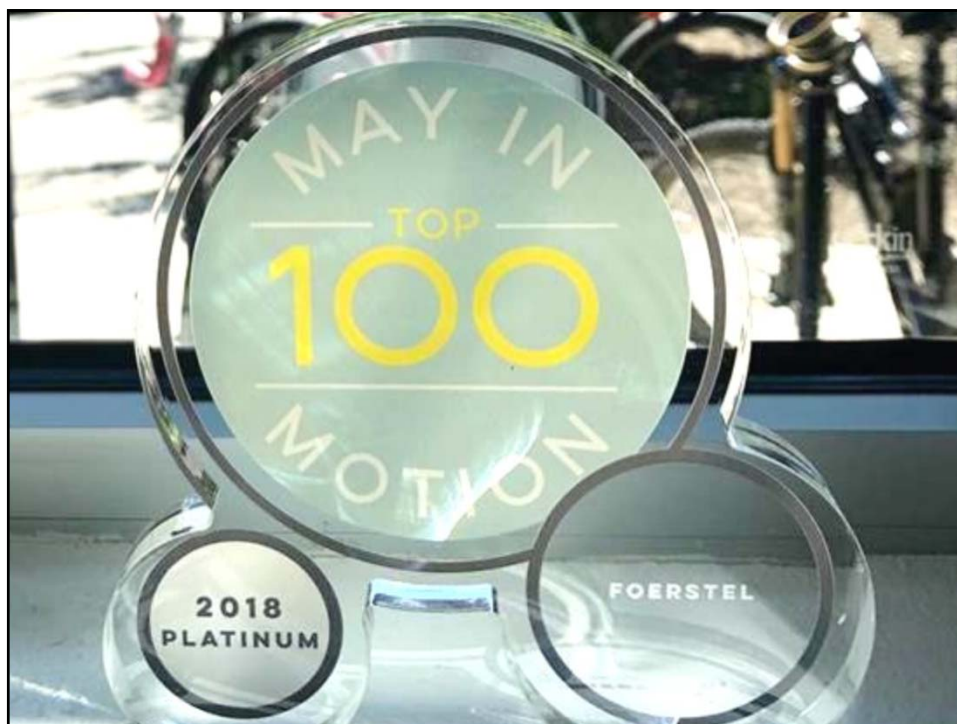
Git 'Er Done

- **December:** Sponsors & Outline Plan
- **January – April:** Recruit
- **May:** Implement
- **June:** Celebrate
- **July – December:** Follow-up



Implementation

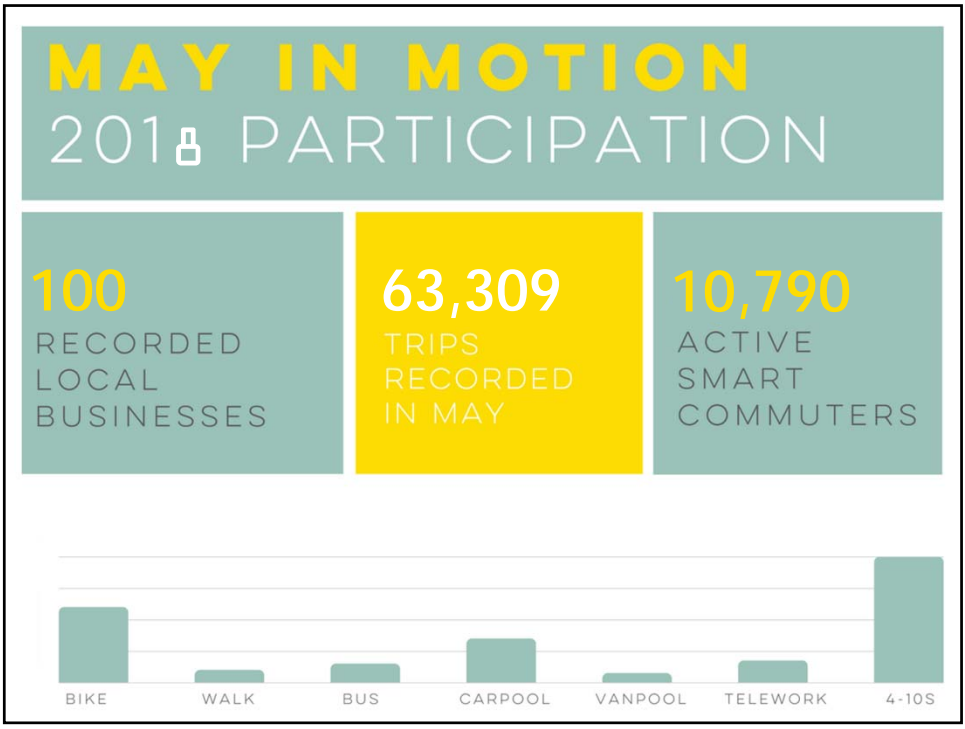












Moving Forward

- Presentations/Events
- Kickoff
- Number of Businesses
- Business Follow-up
 - Handholding
 - Lack of participation

REPORT CARD

NAME:

GRADE: PROVIDED BY:

NOTES:
Thank you for your participation in May in Motion! YOU ROCK! Take a look at your state, consider what worked well for you, what new things you'd like to try, and what areas you would like assistance with. We can help!

ACTIVITY:	GRADE:
Participation:	A B C
Incentives:	A B C
Promotions:	A B C

COMMENTS:

GRADING SYSTEM:
 A—Excellent
 B—Good
 C—Needs Improvement

See reverse side of report card for additional details on grades and opportunities for improvement

Videos

